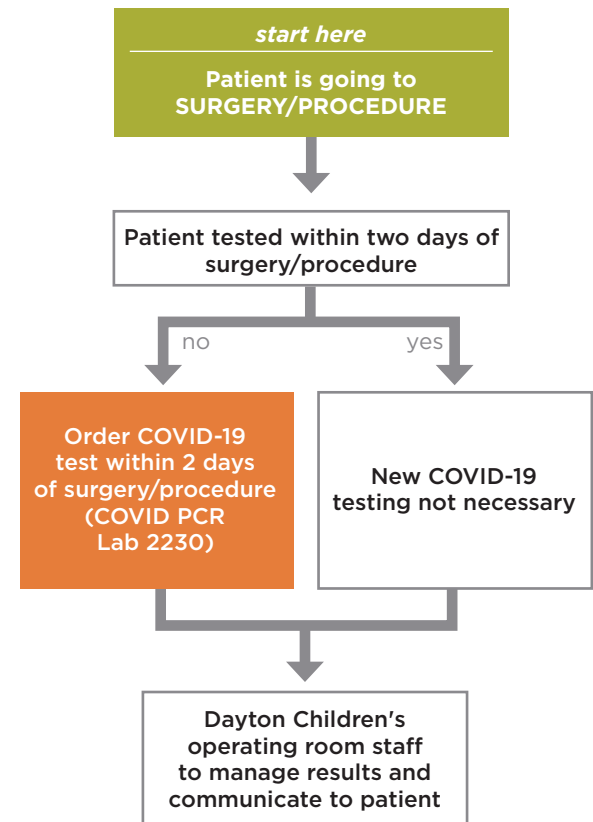
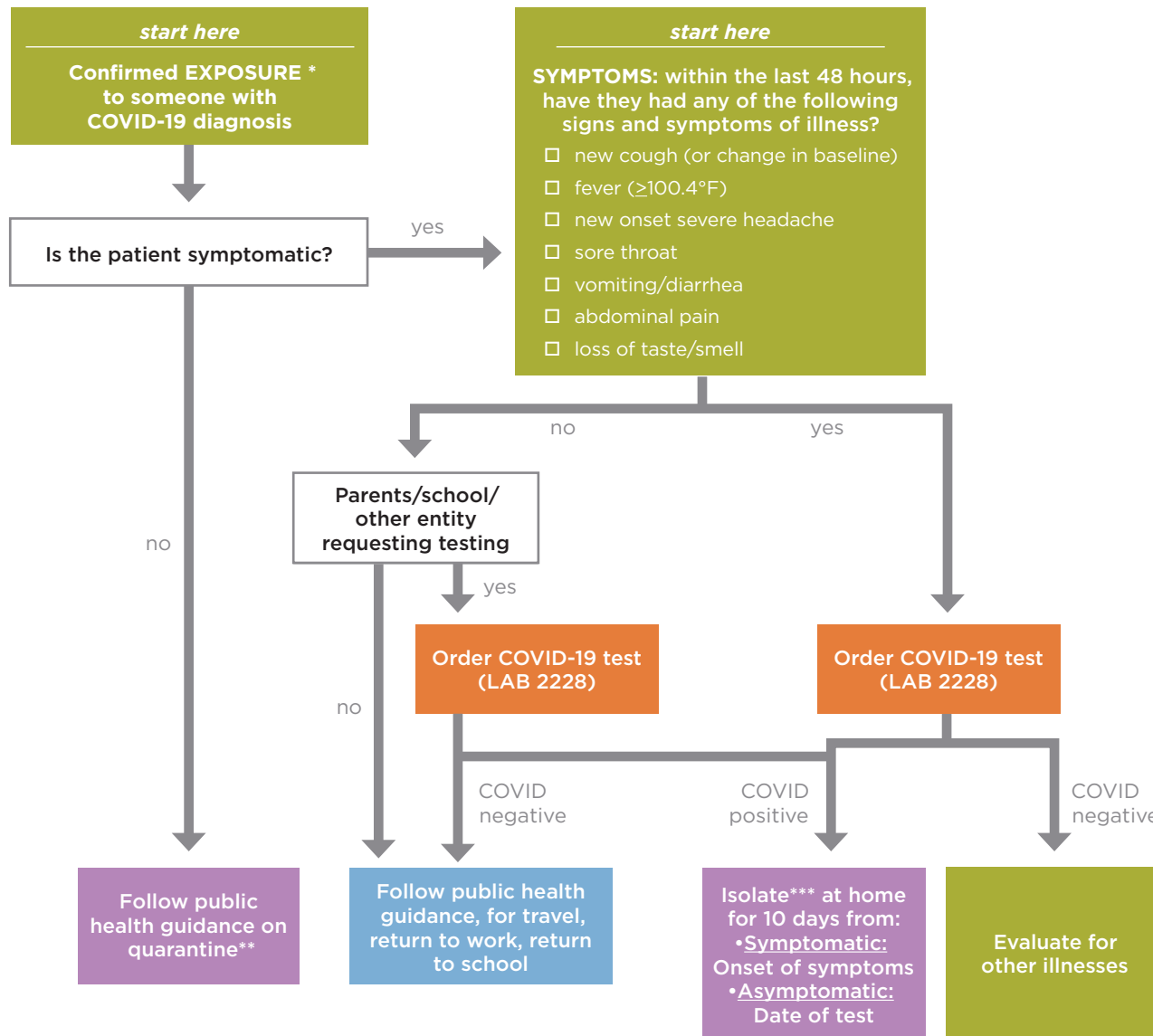


who needs COVID-19 testing? guidelines for community providers



Definitions

* **Exposure:** Within the last 14 days, were they within 6 feet for longer than 15 minutes with a person who is diagnosed with COVID-19

** **Quarantine:** Separate or restrict movement of people who were exposed to a contagious illness to see if they become sick

*** **Isolate:** Separate a sick or contagious person from others who are not sick

