

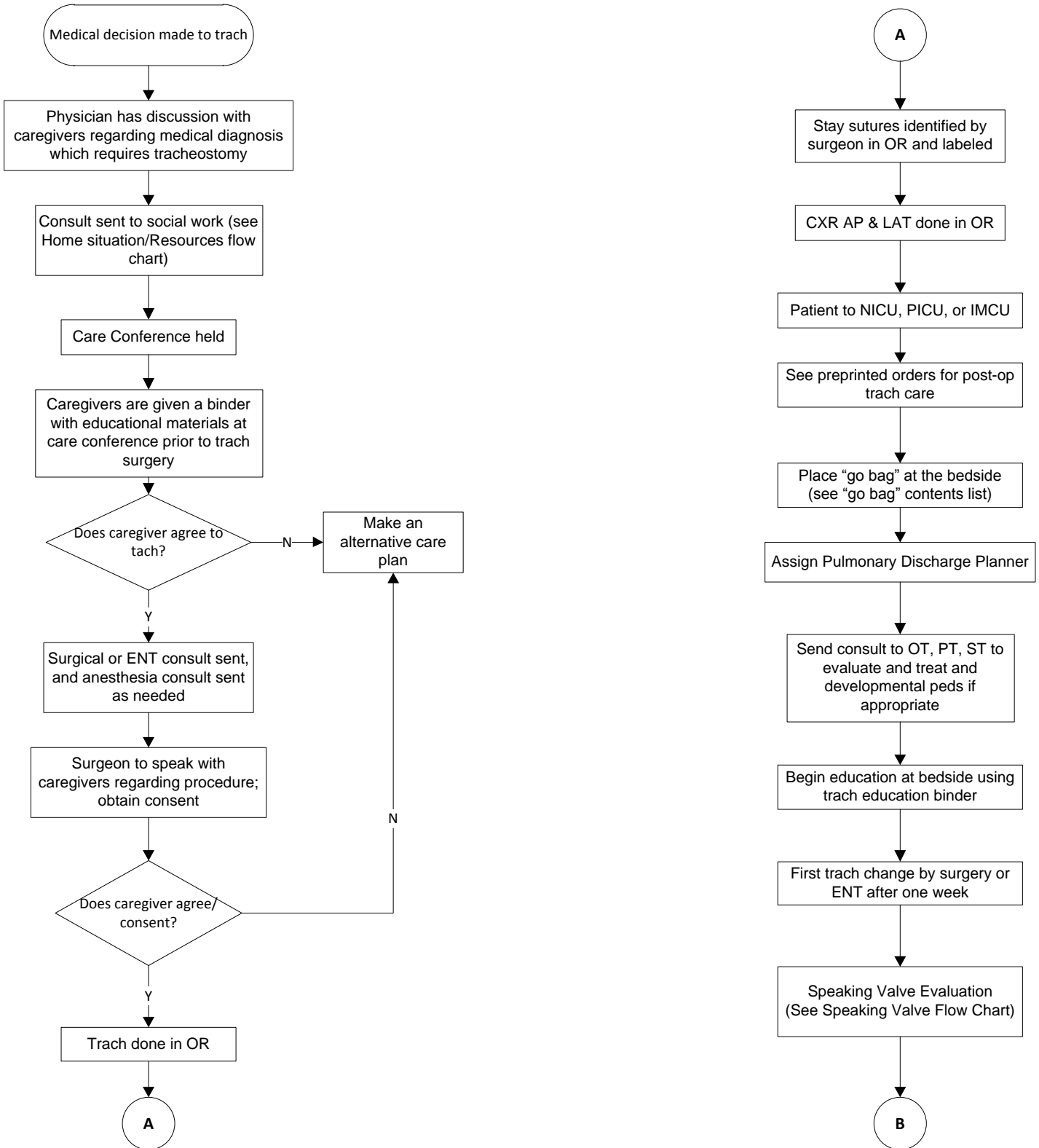


DAYTON CHILDREN'S HOSPITAL  
CLINICAL PRACTICE GUIDELINES

**DISCLAIMER:** This Clinical Practice Guideline (CPG) generally describes a recommended course of treatment for patients with the identified health needs. This CPG is not presented and should not be used as a substitute for the advice of a licensed independent practitioner, as individual patients may require different treatments from those specified, and guidelines cannot address the unique needs of each patient. Dayton Children's shall not be liable for direct, indirect, special, incidental or consequential damages related to the use of this CPG.

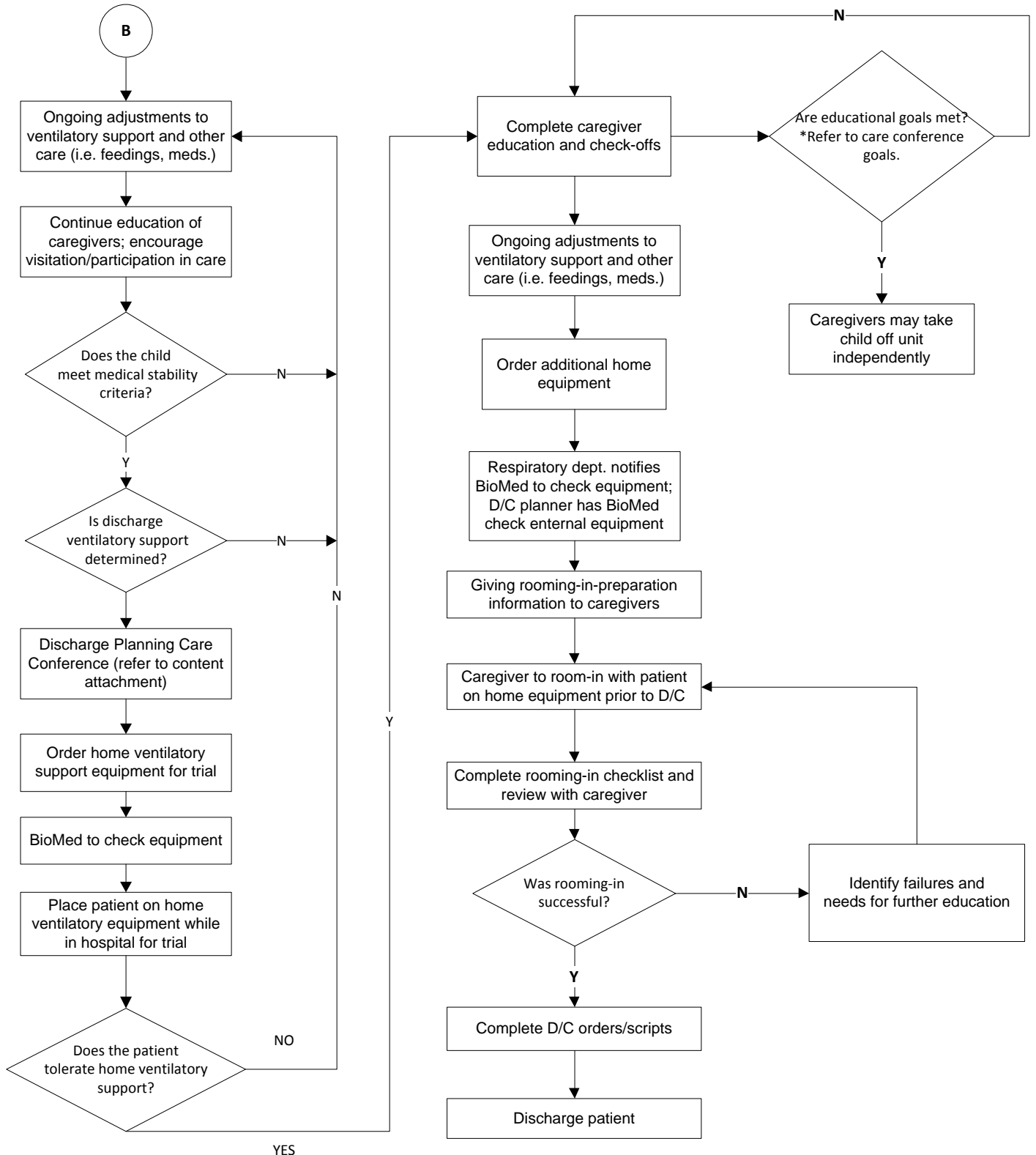


# Trach Clinical Practice Guideline



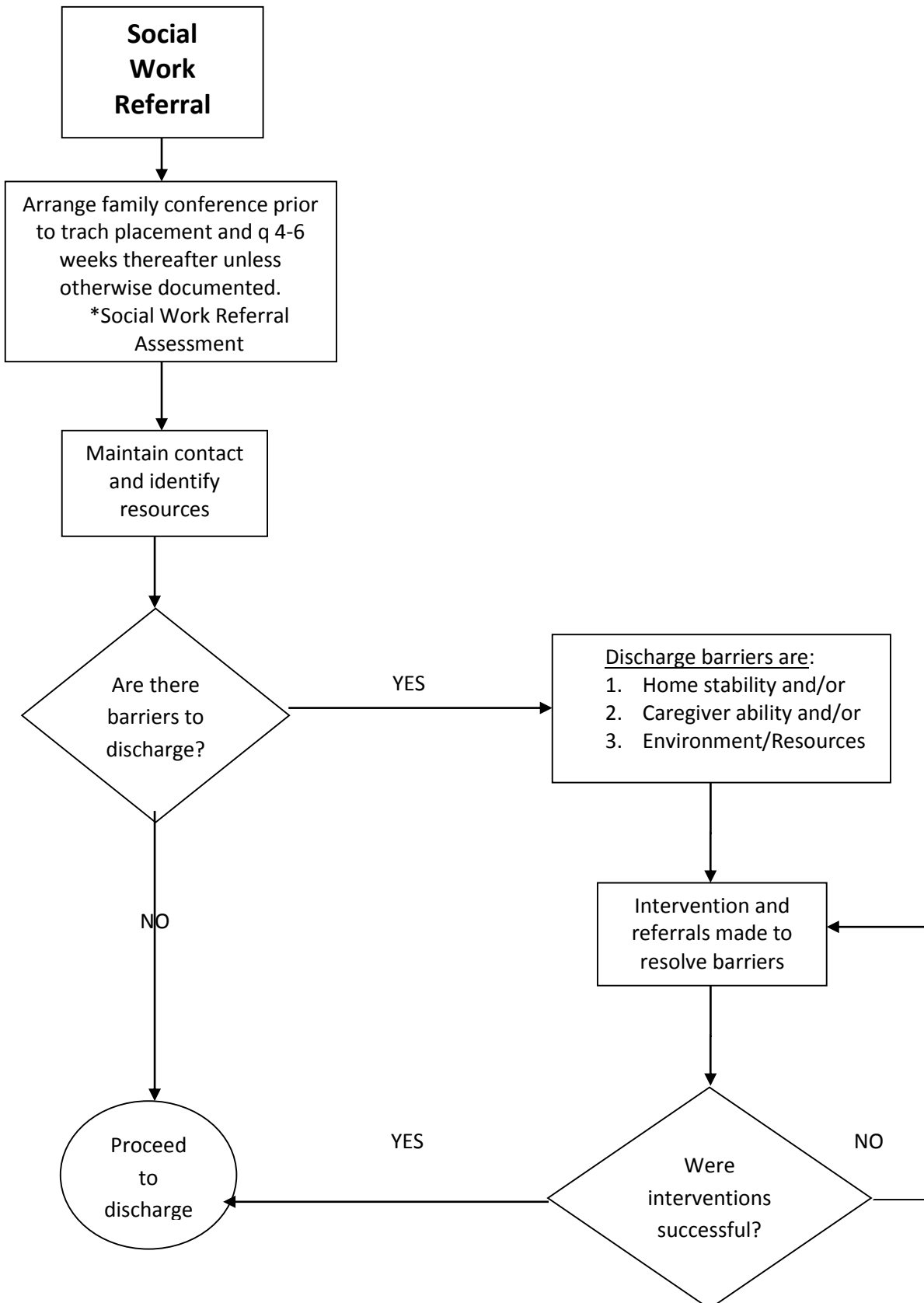


Dayton Children's Hospital  
Dayton, Ohio  
**Trach**  
**Clinical Practice Guideline**





## Home Situations / Resources





# Go-Bag Supplies

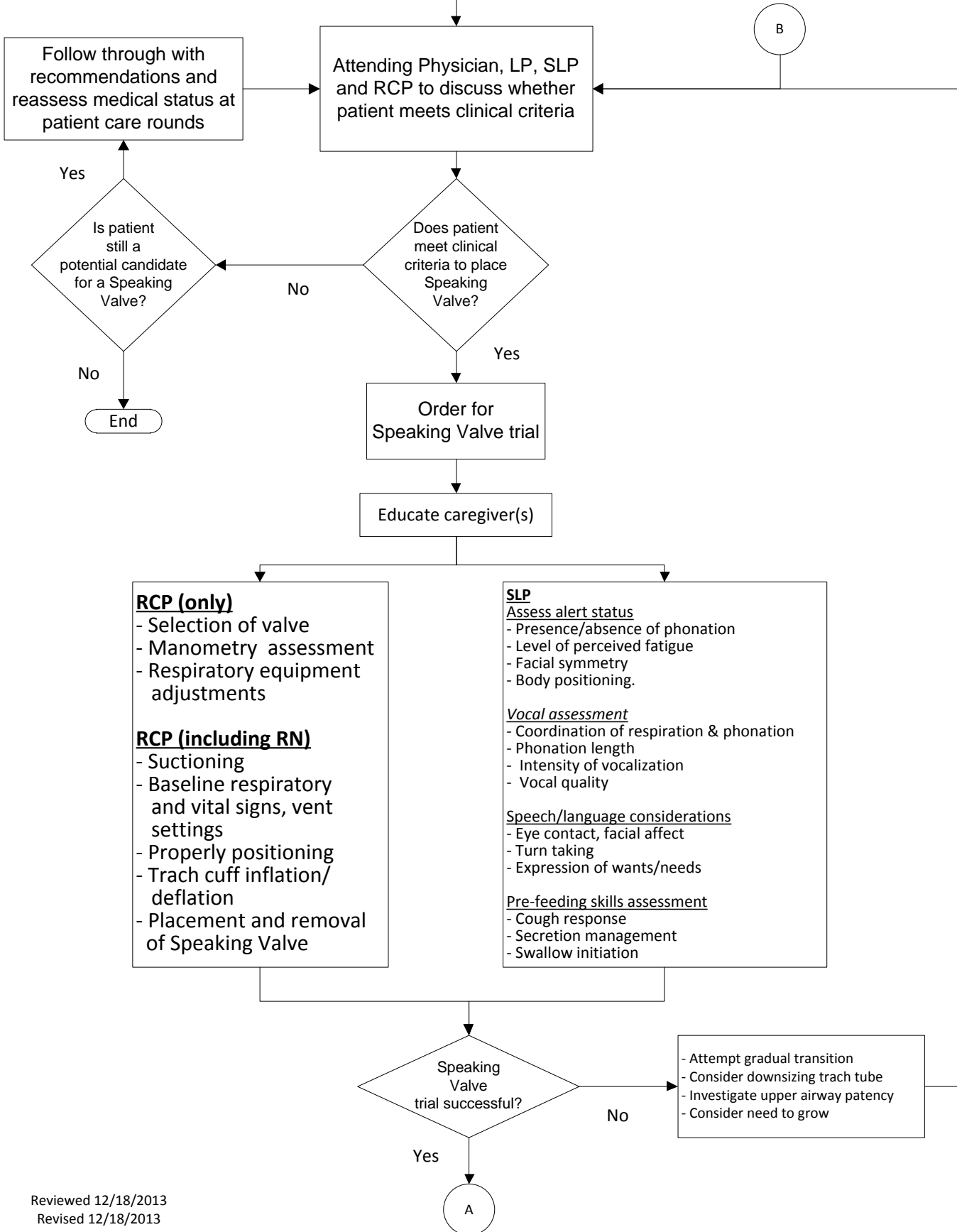
***This bag of supplies and the portable suction machine must be with the child at all times!!!***

- Two tracheostomy tubes with obturators:
  - current size
  - one size smaller
- Water soluble lubricant
- Trach ties
- Split 2x2 gauze
- Scissors
- Soft material for neck roll
- Self-inflating resuscitation bag and face mask
- Hand sanitizer
- Manual suction device
- Suction catheters
- Saline solution (bullets)
- Tissues
- Artificial nose
- Medications
- Medical history of child
- Cell phone (suggested)

***Check contents of bag prior to every patient transport!!!!***



# Speaking Valve Evaluation



- RCP (only)**
- Selection of valve
  - Manometry assessment
  - Respiratory equipment adjustments
- RCP (including RN)**
- Suctioning
  - Baseline respiratory and vital signs, vent settings
  - Properly positioning
  - Trach cuff inflation/deflation
  - Placement and removal of Speaking Valve

- SLP**
- Assess alert status
- Presence/absence of phonation
  - Level of perceived fatigue
  - Facial symmetry
  - Body positioning.
- Vocal assessment
- Coordination of respiration & phonation
  - Phonation length
  - Intensity of vocalization
  - Vocal quality
- Speech/language considerations
- Eye contact, facial affect
  - Turn taking
  - Expression of wants/needs
- Pre-feeding skills assessment
- Cough response
  - Secretion management
  - Swallow initiation

- Attempt gradual transition
- Consider downsizing trach tube
- Investigate upper airway patency
- Consider need to grow

