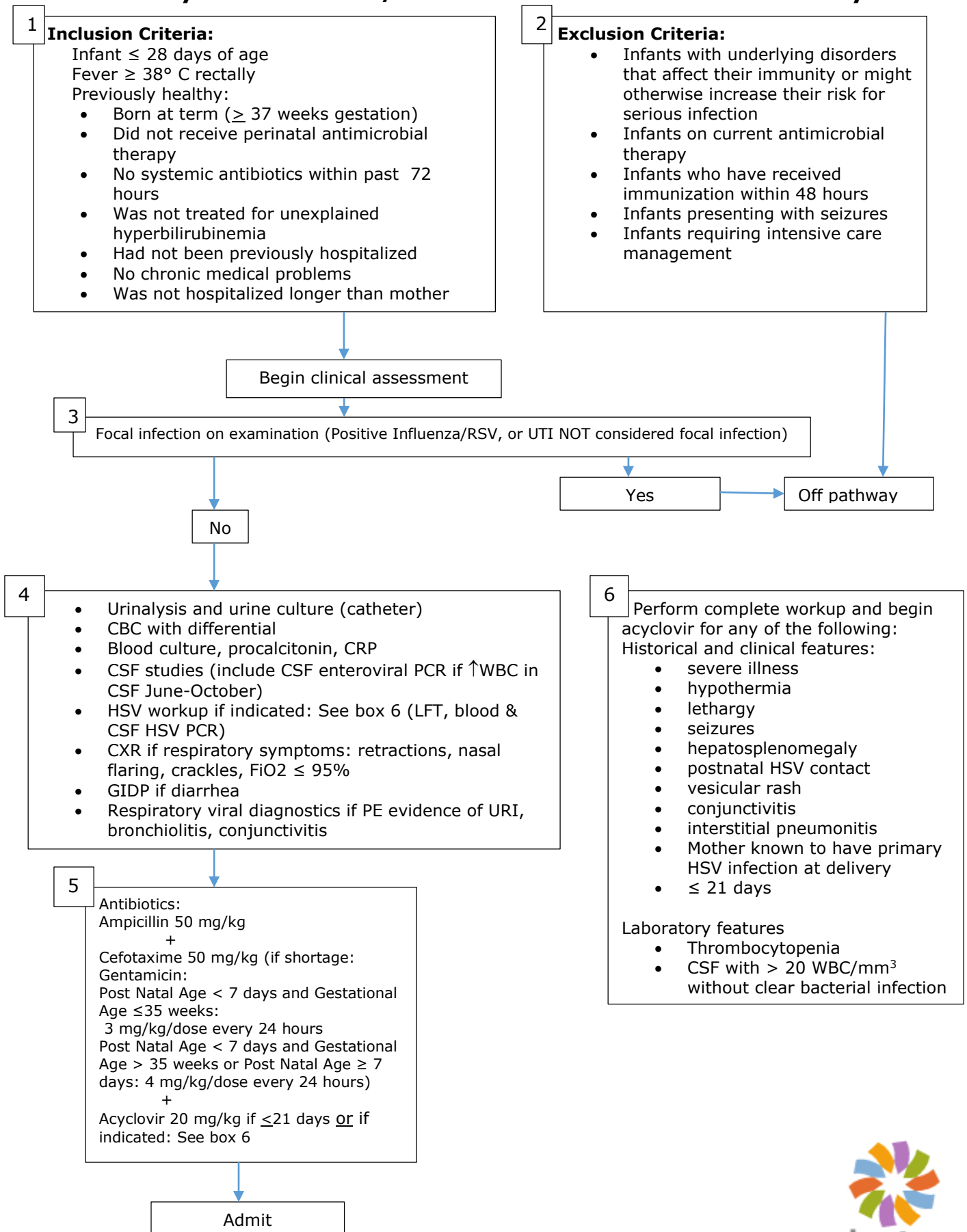




DAYTON CHILDREN'S HOSPITAL  
CLINICAL PRACTICE GUIDELINES

**DISCLAIMER:** This Clinical Practice Guideline (CPG) generally describes a recommended course of treatment for patients with the identified health needs. This CPG is not presented and should not be used as a substitute for the advice of a licensed independent practitioner, as individual patients may require different treatments from those specified, and guidelines cannot address the unique needs of each patient. Dayton Children's shall not be liable for direct, indirect, special, incidental or consequential damages related to the use of this CPG.

# ED Pathway for Evaluation /Treatment of Febrile Infants 0-28 Days



# ED Pathway for Evaluation/Treatment of Febrile Infants

## References

1. Byrington, C. et al. Costs and infant outcomes after implementation of a care process model for febrile infants. *Pediatrics* 2012;130:e16-e24.
2. Huppler, A. et al. Performance of low-risk criteria in the evaluation of young infants with fever: review of the literature. *Pediatrics* 2010;125:228-233.
3. Escobar, G. et al. Stratification of risk of early-onset sepsis in newborns  $\geq$  34 weeks' gestation. *Pediatrics* 2014;133:30-36
4. Polin, R. et al. Management of neonates with suspected or proven early-onset bacterial sepsis. *Pediatrics* 2012;129:1006-1015.

